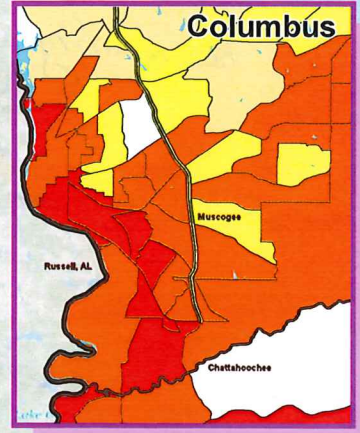
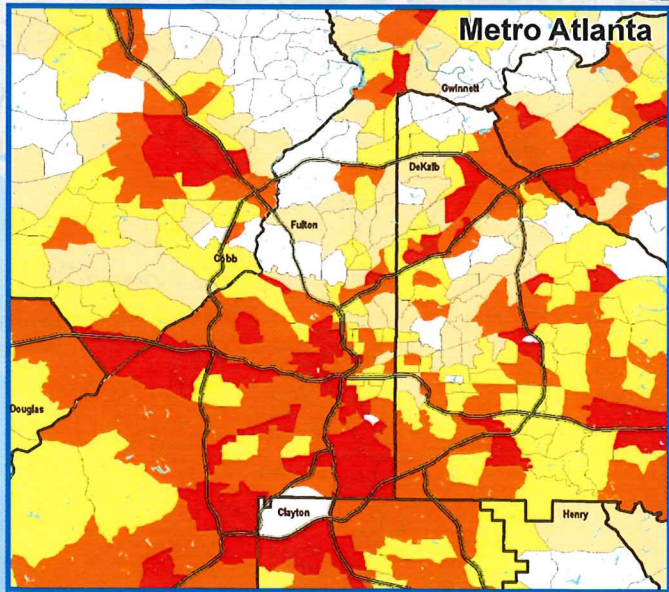
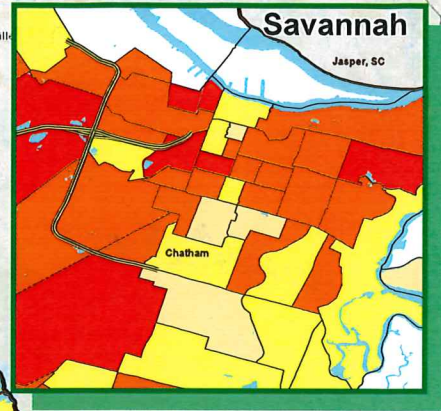
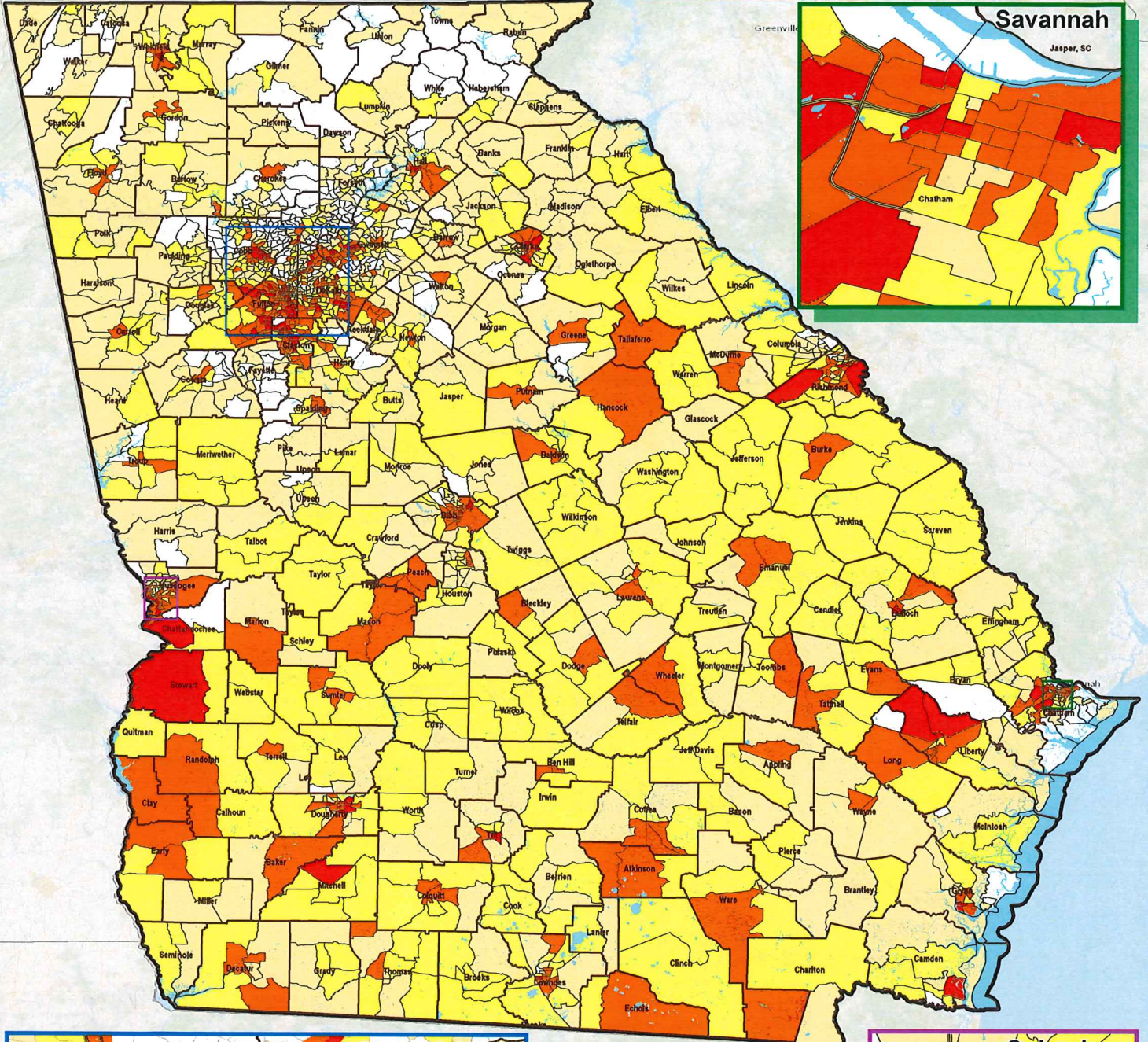


Georgia - Census Low Response Score* By Census Tract



Legend

- Tract
- County

Low Response Score

- 0 - 16%
- 17 - 21%
- 22 - 26%
- 27 - 31%
- 32 - 49%

*The Census Low Response Score (LRS) is a continuous score that predicts whether a tract will produce a low response rate. The score for a tract is inversely related to the mail return rate from the 2010 Census for that tract. Therefore, the people living in tracts with a lower LRS are more likely to respond to 2020 Census than those with a higher LRS.