

# The 2020 Census Local Update of Census Addresses Operation (LUCA)

## What is LUCA?

LUCA is the only opportunity offered to tribal, state, and local governments to review and comment on the U.S. Census Bureau's residential address list for their jurisdiction prior to the 2020 Census. The Census Bureau relies on a complete and accurate address list to reach every living quarters and associated population for inclusion in the census.



## Why participate in LUCA?

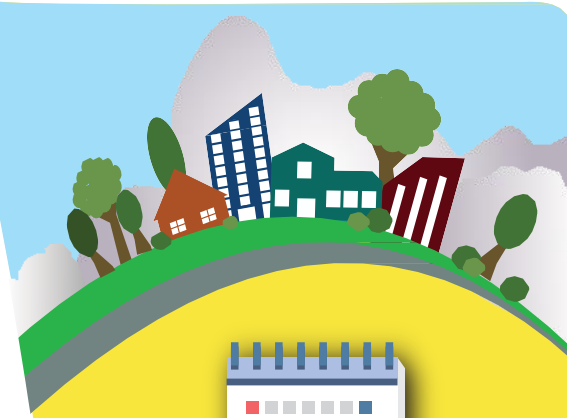
- To help ensure an accurate decennial census count in your community.
- To help the federal government distribute more than \$400 billion in funds annually for infrastructure, programs, and services.
- To help your community plan for future needs.

## Who can participate in LUCA?

Active, functioning, legal governments can participate in LUCA. These include:

- Federally recognized tribes with a reservation and/or off-reservation trust lands.
- States.
- Counties.
- Cities (incorporated places).
- Townships (minor civil divisions).

If you are unable to participate in LUCA, you may designate an alternate reviewer for your government, such as your county, state data center, or regional planning agency.



## Schedule

- January 2017: Advance notification of LUCA mailed to the highest elected official (HEO) or Tribal Chairperson (TC) of all eligible governments and other LUCA contacts.
- March 2017: LUCA promotional workshops begin.
- July 2017: Invitation letter and registration forms mailed to the HEO or TC of all eligible governments.
- October 2017: Training workshops begin. Self-training aids and Webinars will be available online at the LUCA Web site.
- February 2018: Participation materials mailed to registered participants. Participants have 120 calendar days from the receipt of materials to complete their review.
- August 2019: Feedback materials offered to participants with the results of Address Canvassing.
- **April 1, 2020: Census Day.**

For more information about LUCA, call 1-844-344-0169, e-mail us at <GEO.2020.LUCA@census.gov>, or visit our Web site at <www.census.gov/geo/partnerships/luca.html>.

## LUCA Materials

The Geographic Update Partnership Software (GUPS) is new for LUCA. The GUPS is a self-contained Geographic Information System (GIS) update and processing package. In addition to the software, you will receive the Census Bureau's address list, address count list by



census block, and Topologically Integrated Geographic Encoding and Referencing (TIGER) partnership shapefiles.

The Census Bureau offers its address list in digital or paper formats. The digital format requires the use of spreadsheet or database software. The paper format is available only to governments with 6,000 or fewer addresses.

Maps are offered in digital (TIGER partnership shapefiles that require GIS software) or paper (large format maps are 42 X 36 inches and include a DVD of small format [8.5 X 14 inches] block maps in Adobe PDF) formats.

The Census Bureau offers in-person training using LUCA materials. Self-training aids and Webinars are available online at the LUCA Web site.

## What's new for LUCA?

- Pre-LUCA activities provide more opportunities to submit address information and receive feedback through the continuous Geographic Support System (GSS) Program.
- Streamlined participation through the Full Address List Review provides the opportunity to review and update the Census Bureau's address list.
- The Census Bureau's digital address list is available in new, convenient standard software formats.
- Comprehensive data that includes ungeocoded address and residential structure coordinates.



## Preparing for LUCA

You will receive only the addresses within your jurisdiction's boundaries that are currently on file with the Census Bureau. By participating in the 2017 Boundary and Annexation Survey (BAS), you have the opportunity to verify or update your jurisdiction's boundaries. Doing this will ensure that you receive the complete list of addresses for your jurisdiction in LUCA.

To prepare your address list before you receive your LUCA materials:

- Ensure that your address list contains multiunit structure identifiers (such as apartment numbers for individual units) and that you can distinguish between residential addresses and nonresidential addresses.
- Identify local address sources, such as building permits, E-911 address files, local utility records, annexation records, and assessment or taxation files.
- Visit the LUCA Web site or plan to attend a LUCA promotional workshop to get more information about participating in the program.

## Connect With Us

