

DRAFT Areas Requiring Special Attention in Northwest Georgia

The Areas Requiring Special Attention map identifies areas that may need targeted monitoring and mitigation due to potential development conflicts or opportunities for economic growth.

THREATENED (POTENTIALLY IMPACTED)	RAPID DEVELOPMENT	REDEVELOPMENT
--	------------------------------	----------------------

Areas where significant natural or cultural resources overlap developed and developing areas and therefore are likely to be impacted by development

Areas where rapid development is likely to occur and has or may outpace the availability of community facilities and services, including transportation

Areas in need of or currently experiencing redevelopment. These areas include: State & Federal Opportunity Zones, Urban Redevelopment Areas and Census Tracts with 25%+ Poverty

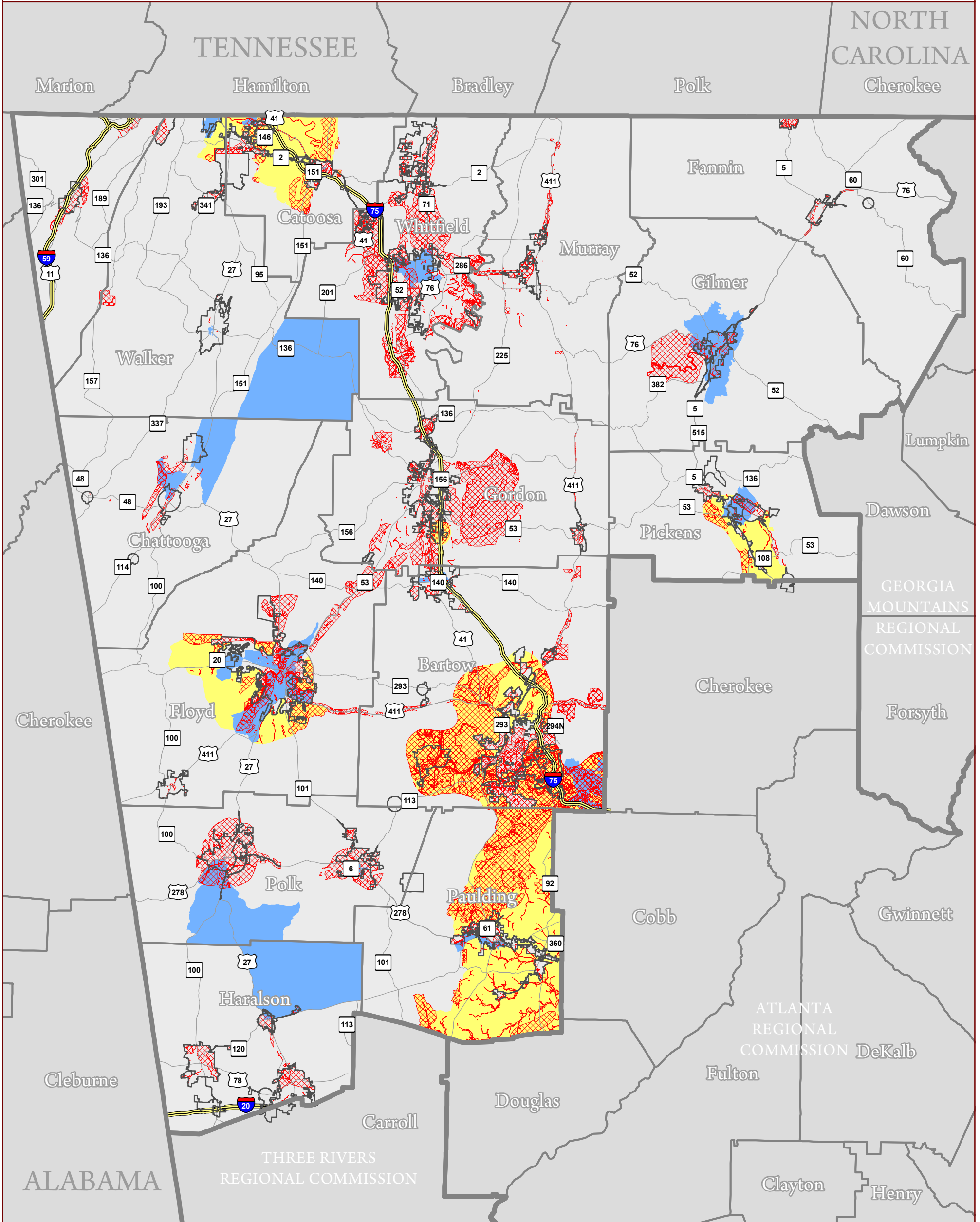


northwest
GEORGIA
REGIONAL COMMISSION

1 in = 8 miles

© January 2024

Interstate	Highways	City Boundary	County Boundary	Regional Commission Boundary



This is a product of the Northwest Georgia Regional Commission Geographic Information System Services, 503 West Waugh Street, Dalton, Georgia 30720, (706) 272-2300, www.nwgrc.org. This map is a representation of features displayed and does not constitute a legal representation of any one feature. This product may not be used or reproduced without the NWGRC logo, name and disclaimer being displayed.

FIGURE 1: NORTHWEST GEORGIA PROJECTED 2045 REGIONAL LAND USE MAP