

DRAFT NW Georgia Conservation and Projected 2050 Development

Regional Land Use Categories

RURAL DEVELOPING DEVELOPED

CONSERVATION Southeastern Ecological Framework (which include Public Lands such as National Forest, State Parks and Wildlife Management Areas), Civil War Battlefields, State Historic Sites, Trail Corridors, Groundwater Recharge Areas, Protected River Corridors, Protected Mountains, NWI Wetlands, Water Supply Watersheds

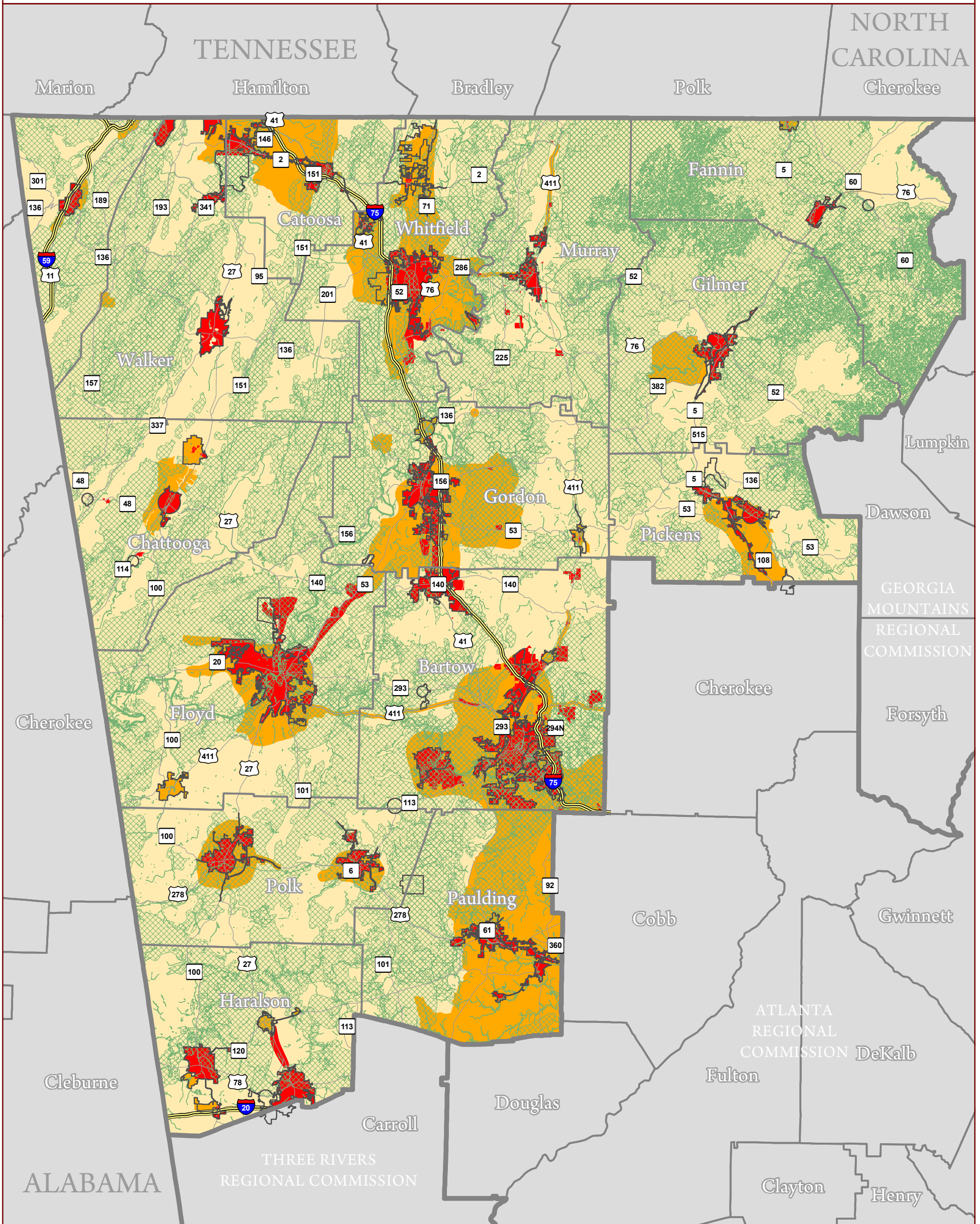


northwest
GEORGIA
REGIONAL COMMISSION

1 in = 8 miles

© January 2024

Interstate Highways City Boundary County Boundary Regional Commission Boundary



This is a product of the Northwest Georgia Regional Commission Geographic Information System Services, 503 West Waugh Street, Dalton, Georgia 30720, (706) 272-2300, www.nwgrc.org. This map is a representation of features displayed and does not constitute a legal representation of any one feature. This product may not be used or reproduced without the NWGRC logo, name and disclaimer being displayed.

FIGURE 1: NORTHWEST GEORGIA PROJECTED 2045 REGIONAL LAND USE MAP